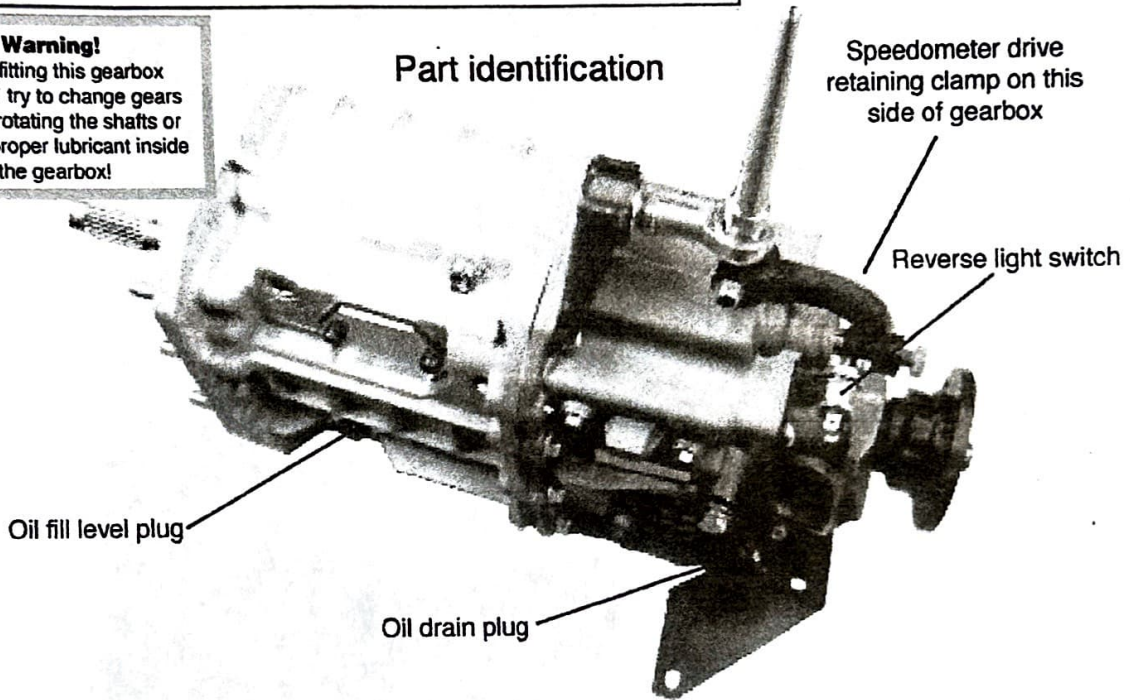


E TYPE 5 SPEED GEARBOX INSTRUCTIONS

Warning!

When fitting this gearbox DO NOT try to change gears without rotating the shafts or without proper lubricant inside the gearbox!

Part identification

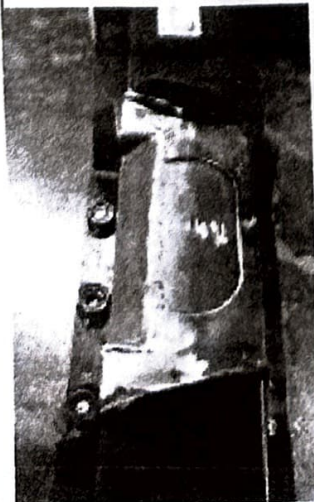


Important Notes for 5 speed gearbox into E Type floorpan.

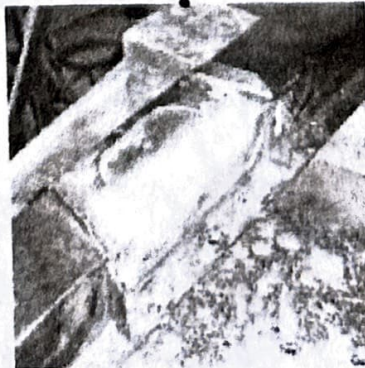
Cut chassis crossmember if necessary to clear rear boss of gearbox. Before final welding of insert check alignment of gearbox and propshaft, and clearance of prop flange to crossmember.

Bellhousing to gearbox mounting studs are supplied (7/16" UNF) and should not be changed with any original Jaguar items.

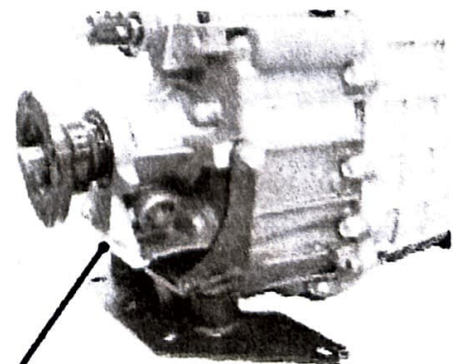
Only use SAE80 Gear oil, **DO NOT** use ATF (or any thin oil).



Gearbox rear mounting showing position from front of crossmember



You may need to modify crossmember where shown if deemed insufficient clearance



Crossmember modification is

E TYPE 5 SPEED GEARBOX INSTRUCTIONS

KIT INCLUDES:-

Complete Broadspport gearbox, Complete gear linkage, Reverse light switch, Speedometer cable assembly, Rear chassis mounting kit, Clutch plate (organic), Bellhousing mounting studs x 8 (7/16"UNF).

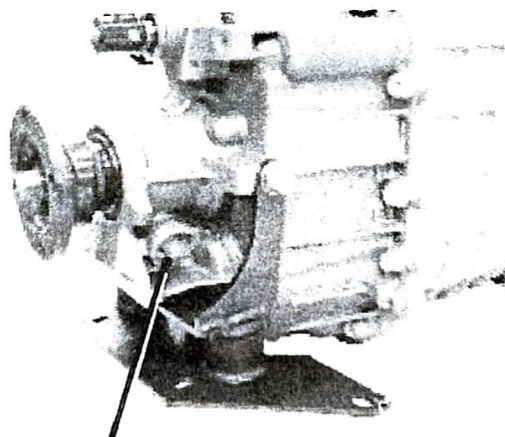
Note: Propshaft not included, we can supply a ready made propshaft (correct measurement to have your original propshaft altered is to shorten by 108mm). Please enquire.

Basic information on Broadspport 5-speed transmission:-

Gear Ratio's

1st.	=	3.31:1
2nd	=	2.08:1
3rd	=	1.36:1
4th	=	1:1
5th	=	0.763:1
Reverse	=	3.26:1

Special gearbox case cast for Broadspport to fit standard Jaguar bellhousing bolt pattern (no adaptor plate necessary). - the world renowned MT75 gearset as used in Ford 'Cosworth' engineered cars, very strong and with many years of development to produce one of the most durable and dependable transmission kits used. All linkage, mountings and ancilliary parts developed by Broadspport over 18 months research. Gearboxes are **NEW** and not reconditioned, tested under load and only released when all inspections passed. id tags on all gearboxes for tracing under ISO 9002 guidelines.



Speedo drive circlip retainer - light grease only

Warning!

When fitting this gearbox
DO NOT try to change gears
without rotating the shafts or
without proper lubricant inside the
gearbox!